

# Fabric Freedom Morris Springtime

Quilt size 36" x 88"

Block size 16<sup>3</sup>/<sub>4</sub>" x 16<sup>3</sup>/<sub>4</sub>"

Cushions 18" x 18"

Made by Sally Ablett

## Requirements

Cream Reflections - F1222 col.31 – 1 metre

Small floral on dark green ground - F140 col.22 - 50cm

Floral on light green ground - F141 col.22 - 50cm

Light green floral on cream ground - F142 col.22 - 50cm

Green on green linear design - F143 col.22 - 50cm

Green on cream linear design - F143 col.32 - 50cm

Green squares - F144 col.22 - 2 rows

Green cushion panel - F145 col.22 - 2 panel pieces

Wadding and backing for quilt - 40" x 92"

Backing for both cushions - 50cm

Wadding for both cushions - 50cm

Thread

Aurifil threadcount 40

2325 – light tan

2021 – cream

## Cutting

### Quilt

The following cutting instructions are for the making of one block. You need to cut two sets from each of your 5 main fabric colourways, to make 10 blocks in total. You are then going to mix the fabric colours about to make 5 paired blocks.

A – 1 x 2<sup>3</sup>/<sub>4</sub>" x 10<sup>3</sup>/<sub>4</sub>" rectangle

B – 2 x 1<sup>7</sup>/<sub>8</sub>" x 3<sup>3</sup>/<sub>4</sub>" rectangle  
2 x 1<sup>7</sup>/<sub>8</sub>" x 6<sup>1</sup>/<sub>2</sub>" rectangle

C – 1 x 2<sup>1</sup>/<sub>2</sub>" x 8<sup>1</sup>/<sub>2</sub>" rectangle

D – 2 x 2<sup>7</sup>/<sub>8</sub>" x 3<sup>3</sup>/<sub>4</sub>" rectangle  
2 x 2<sup>7</sup>/<sub>8</sub>" x 8<sup>1</sup>/<sub>2</sub>" rectangle

E1 – 2 x 2<sup>1</sup>/<sub>2</sub>" x 2<sup>1</sup>/<sub>2</sub>" squares

E2 – 2 x 2<sup>1</sup>/<sub>2</sub>" x 4<sup>1</sup>/<sub>2</sub>" rectangles

F – 1 x 4½” x 4½” squares

G – 1 x 4½” x 13” strip

H – 1 x 2½” x 17¼” strip

J – 2 x 3¾” x 3¾” squares

Cream fabric –

27 x ¾” x 42” strip

6 x 1½” x 42” strip

### Cushions

Panels (145-22) cut to 15½” x 15½”

For the borders, use 2 different fabrics for each cushion

First fabric 4 x 2” x 2” squares

4 x 2” x 5” rectangles

Second fabric 8 x 2” x 5½” rectangles

### Making

#### Quilt

To make colour placement within the blocks easier, refer to the Block diagram. The numbers indicate that you should use the same fabric colourway in that section. Each block colour layout is repeated, making 5 pairs of identical blocks. As something alternative to make, you may choose to switch out the “E” section, and replace it with a 3½” x 6½” strip (cut from the end section of a cushion panel), joined to a 1½” x 6½” strip of leftover fabric.

Refer to the block diagram, and lay out all of your fabric pieces accordingly.

Start by joining the “B” fabrics to the centre square of “J”. Do the same with the “D” and “J” sections.

Next make up your “E” sections.

Join “F” to “G” using sashing in between and then add sashing above and below.

Add the panel of “H” to the bottom.

Now assemble the top section.

Join a strip of sashing to the bottom of the “B” block, and then attach “E” underneath it.

Join a strip of sashing to the bottom of “C” and then attach the “D” block underneath this.

Now join the three sections of the top section together, with sashing in between.

Join the top and bottom sections together.

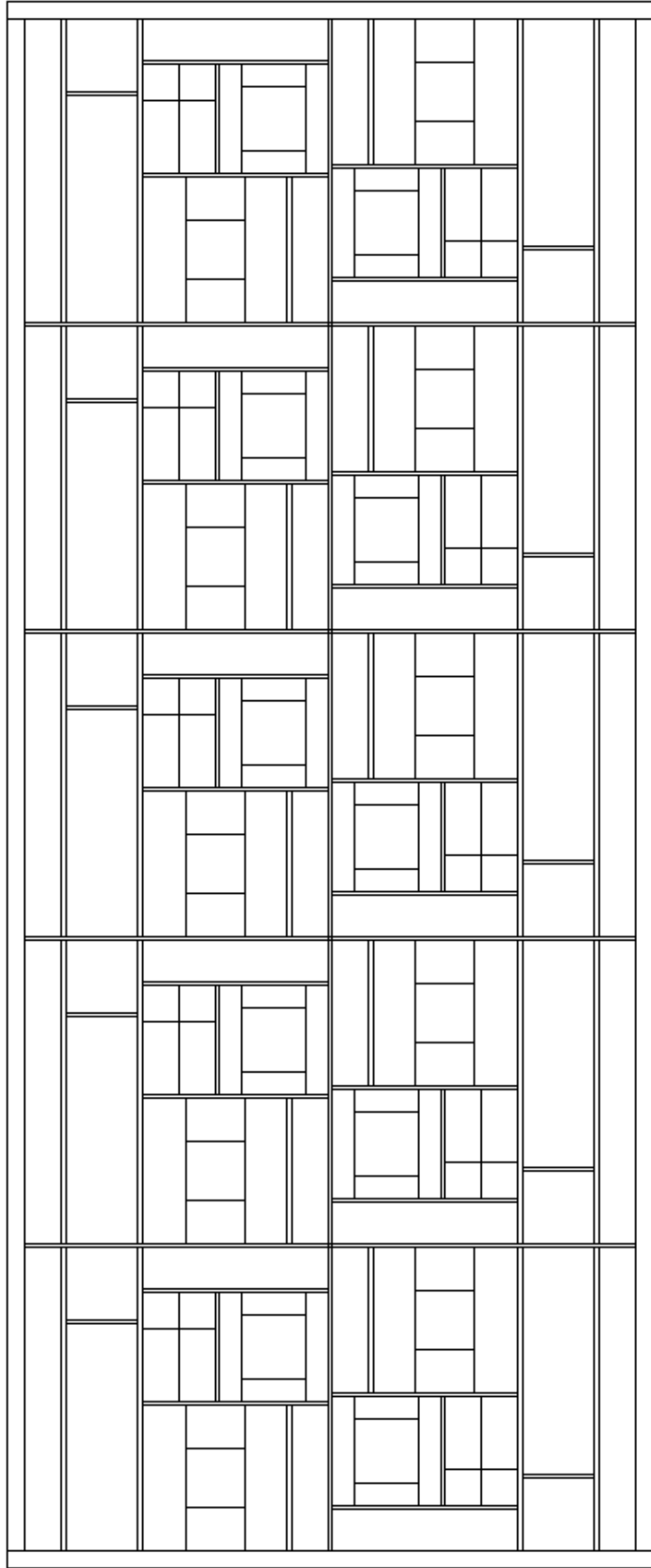
You need to make 10 of these in total.

Refer to the main diagram

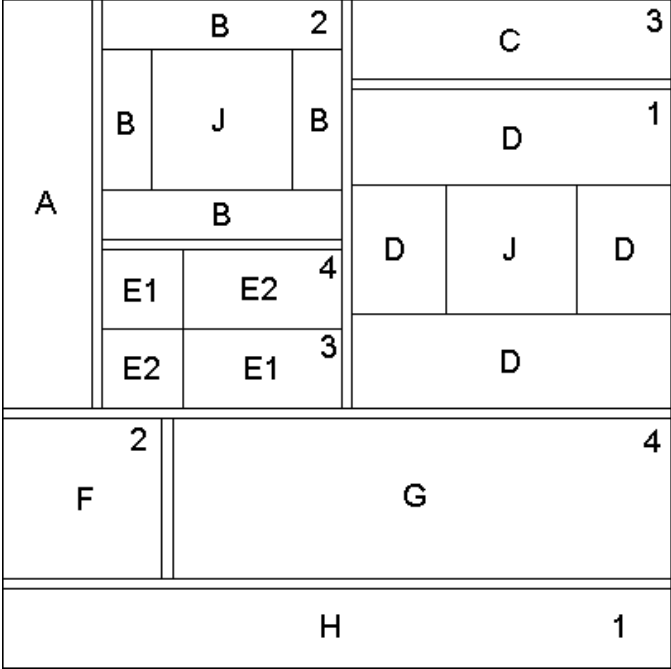
Move your blocks around until you are happy with the layout.  
Sew together in pairs, using a piece of sashing in the middle. Once all 5 pairs are joined, join them together from top to bottom to complete the centre panel. To make the border join together 2 strips of 1½" x 42" of the cream fabric, and attach this to the long sides of the centre panel, now press back and trim. Add border pieces to the top and bottom, press back and trim.  
Sandwich together the top layer, wadding and backing fabric.  
Quilt taking inspiration from the designs on the fabric.  
Bind using your cream fabric.

### Cushion

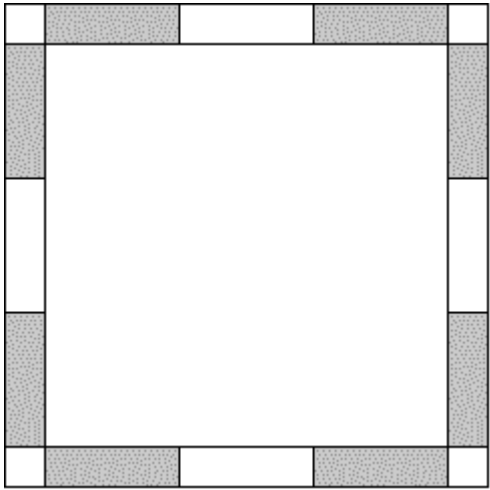
Lay out your pieces as shown in the diagram.  
Join the border pieces together to form strips.  
Add the corner squares to the top and bottom strips.  
Join on a border strip to either side of the panel and press back.  
Join the two remaining long strips to the top and bottom.  
Place this onto wadding and quilt.  
Make up an envelope back and assemble the cushion.  
You should make two of these in total.  
If desired, add tassels to the corners and embellish in your own way.



*main diagram*



*block diagram*



*cushion diagram*