



Regents Park

Designed by sally Ablett

Size 60" x 60"

All the fabrics in this range are from Regents Park by Fabric Freedom

Please read through all the instructions before you begin, all seam allowances are included and are $\frac{1}{4}$ " unless stated otherwise.

Requirements

- | | |
|--|--|
| 1. Blue trailing floral on cream F620 col.29 | - $\frac{1}{2}$ yard - $\frac{1}{2}$ m |
| 2. Pink daisy trail on blue F622 col.29 | - $\frac{1}{2}$ yard - $\frac{1}{2}$ m |
| 3. Blue daisy heads on pink F621 col.30 | - $\frac{3}{8}$ yard - 40cm |
| 4. Pink blossom on cream F618 col.28 | - fat $\frac{1}{4}$ |
| 5. Tiny floral on cream F619 col.29 | - fat $\frac{1}{4}$ |
| 6. Pink daisy heads on blue F621 col.29 | - $\frac{1}{2}$ yard - $\frac{1}{2}$ m |
| 7. Blue daisy trail on pink F622 col.30 | - $\frac{1}{2}$ yard - $\frac{1}{2}$ m |
| 8. Tiny floral on blue F619 col.27 | - $\frac{3}{8}$ yard - 40cm |
| 9. Blue blossom on cream F618 col.27 | - fat $\frac{1}{4}$ |
| 10. Light grey from Perfect Palette H50 col.21 | - $1\frac{1}{2}$ yard - $1\frac{1}{2}$ m |
| 11. Pink daisy trail on cream F622 col.27 | - $\frac{1}{2}$ yard - $\frac{1}{2}$ m |
- Wadding and backing 64" x 64"

Cutting

From fabric 1 cut

52 x $3\frac{1}{2}$ " x $3\frac{1}{2}$ " – block 1

From fabric 2 cut

52 x $2\frac{7}{8}$ " x $4\frac{1}{8}$ " – block 1

From fabric 3 cut

52 x $2\frac{5}{8}$ " x $2\frac{5}{8}$ " cut in half diagonally once – block 1

From fabric 4 cut

52 x $2\frac{1}{4}$ " x $2\frac{1}{4}$ " – block 1

From fabric 5 cut

25 x $2\frac{7}{8}$ " x $2\frac{7}{8}$ " – block 1 and 2

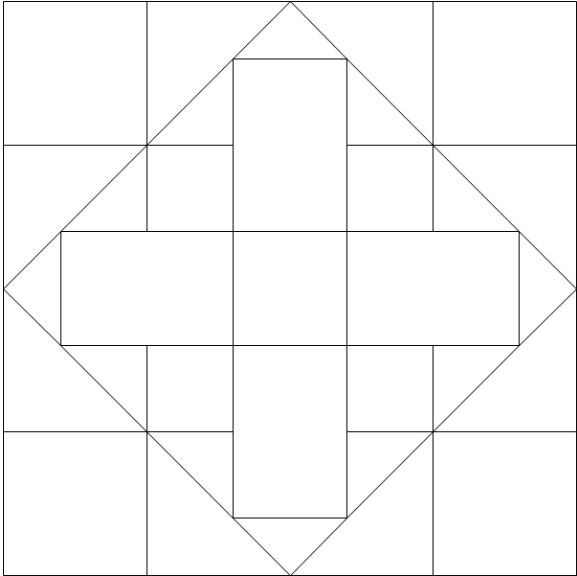
From fabric 6 cut

- 48 x 3½" x 3½" – block 2
- From fabric 7 cut
 - 48 x 2⅞" x 4⅛" – block 2
- From fabric 8 cut
 - 48 x 2⅝" x 2⅝" cut in half diagonally once – block 2
- From fabric 9 cut
 - 48 x 2¼" x 2¼" – block 2
- From fabric 10 cut
 - 100 x 3⅞" x 3⅞" cut in half diagonally once – block 2
 - 25 x 3⅝" x 3⅝" cut in half diagonally twice – block 2
- From fabric 11 cut
 - 6 x 2½" x 42" binding

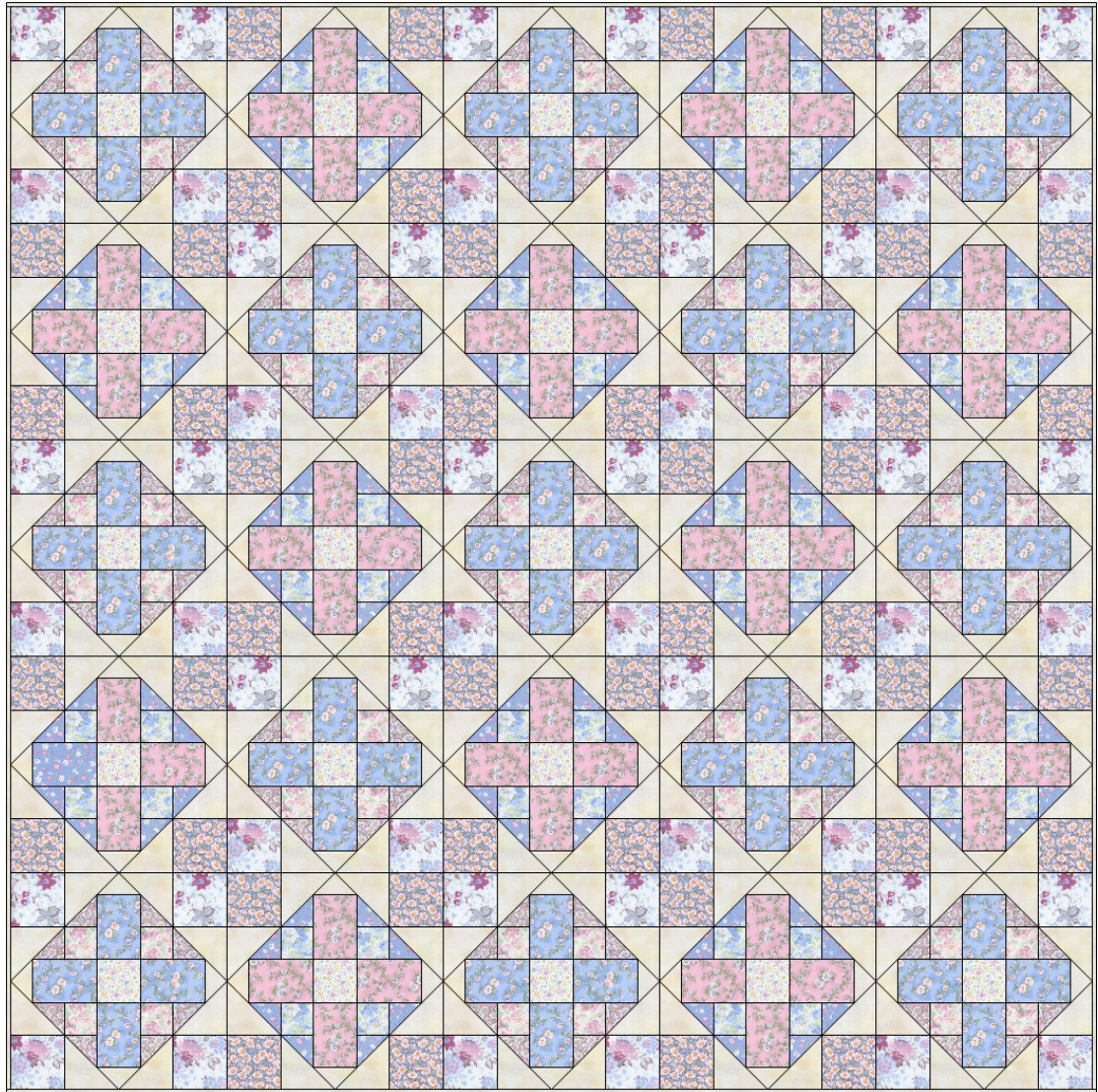
Sewing

Remember to press each seam after sewing.

1. Refer to the picture for fabric selection, lay out all of the pieces needed for the top left corner block.
2. Make the corner triangles first, using the larger squares and triangles, sew triangles to adjacent sides of the corner square, repeat for the other three corners.
3. Use the same method to create the inner triangles, using the smaller squares and triangles.
4. Take the centre square and sew a rectangle to the left and right sides, then sew a small triangle to each end of this piece to create the horizontal centre strip of the block.
5. Sew an inner triangle made at point 3 to either side of each of the two remaining rectangles.
6. Sew these pieces to either side of the centre strip and add a small triangle at the top and bottom to create a large square.
7. Sew the four corner triangles made in point 2, to each side of this square to complete the block.
8. Make fifteen blocks in total with a blue centre strip and thirteen with a pink centre strip.
9. When all the blocks are complete lay them out as shown in the picture and sew together in five rows of five blocks.
10. Sew the rows together and press the seams for each row in opposite directions.
11. Layer the quilt top, wadding and backing fabric together and pin or tack in place.
12. Quilt by hand or machine.
13. Add the binding.



block 1



main diagram