

Fabric Freedom: Sunflowers Quilt

Size 46" x 56"

Made by Sally Ablett

Requirements

Please note fabric numbers for cutting

- | | | |
|-----|--|-----------|
| 1. | Large Sunflowers on cream F254 col 2 | - 3 rows |
| 2. | Sunflowers on cream F250 col 2 | - 30cm. |
| 3. | Sunflowers on black F250 col 1 | - Fat ¼ |
| 4. | Field of Sunflowers F253 col 3 | - Fat ¼ |
| 5. | Field of Sunflowers on cream F253 col 2 | - Fat 1/8 |
| 6. | Field of Sunflowers on black F253 col 1 | - Fat ¼ |
| 7. | Morris Sunflowers on cream F251 col 2 | - Fat 1/8 |
| 8. | Morris Sunflowers on black F251 col 1 | - Fat 1/8 |
| 9. | Linear Sunflowers on black F252 col 1 | - Fat 1/8 |
| 10. | Linear Sunflowers yellow on gold F252 col 3 | - Fat ¼ |
| 11. | Linear Sunflowers black on yellow F252 col 4 | - Fat 1/8 |
| 12. | Linear Sunflowers on cream F252 col 2 | - Fat ¼ |
| 13. | Van Gogh Sunflowers F249 col 2 | - Fat ¼ |
| 14. | Van Gogh Sunflowers F249 col 1 | - Fat ¼ |
| 15. | Green batik F9004 col 6 | - 30cm. |
| 16. | Yellow batik F9004 col 5 | - 80cm. |
| 17. | Black from Misty range F1200 col 4 | - 60cm. |

Wadding & Backing 50" x 60"

Bondaweb 50cm.

Thread -

Aurifil threadcount 40

2125 yellow

5019 green

Please read the assembly instructions carefully before cutting

Cutting

Fabric 1.

2 x 6½" x 6½" - A

Fabric 2.

1 x 2½" x 10½"

2 x 8½" x 10½"

1 x 6⅞" x 6⅞" cut in half diagonally once - C

Fabric 3.

1 x 2½" x 12½"

1 x 6½" x 8½" - B

1 x 8½" x 10½"

Fabric 4.

2 x 1½" x 6½" - A

2 x 1½" x 8½" - A

2 x 2½" x 6½"

1 x 4½" x 10½"

Fabric 5.

1 x 2½" x 6½"

1 x 4½" x 4½"

1 x 2½" x 8½"

Fabric 6.

2 x 1½" x 6½" - A

2 x 1½" x 8½" - A

1 x 6½" x 8½"

1 x 2½" x 10½"

1 x 2½" x 8½" - B

Fabric 7.

1 x 6½" x 8½"

1 x 6½" x 4½"

1 x 4½" x 6½"

Fabric 8.

1 x 2½" x 8½"

1 x 4½" x 8½"

1 x 6½" x 8½"

1 x 6½" x 2½"

Fabric 9.

6 x 1½" x 2½"

6 x 1½" x 4½"

Fabric 10.

12 x 1½" x 8½"

6 x 1½" x 2½"

Fabric 11.

7 x 1½" x 6½"

6 x 1½" x 8½"

Fabric 12.

2 x 1½" x 10½" - F

1 x 6½" x 8½"

1 x 4½" x 6½"

Fabric 13.

1 x 2½" x 4½"

1 x 6½" x 8½"

1 x 6½" x 6½"

1 x 4½" x 10½" - F

Fabric 14.

1 x 6½" x 10½"

1 x 4½" x 6½" - E

1 x 2½" x 10½"

1 x 4½" x 8½"

Fabric 15.

2 x 8½" x 8½"

1 x 4½" x 10½"

3 x 2½" x 4½" - E

1 x 4½" x 8½"

1 x 6⅞" x 6⅞" cut in half diagonally once - C

1 x 3½" x 5½" - D

1 x 3½" x 3½" - D

1 x 6½" x 5½"

Fabric 16.

1 x 3½" x 5½" - D

1 x 3½" x 3½" - D

1 x 2½" x 6½"

1 x 4½" x 8½"

1 x 8½" x 8½"

1 x 4½" x 4½"

1 x 6½" x 8½"

1 x 2½" x 10½" - F

1 x 2½" x 2½"

Fabric 17.

13 x 1½" x 42"

Column 1

$8'' \times 10'' - 2$
 $8'' \times 1'' - 10$
 $8'' \times 4'' - 16$
 $8'' \times 1'' - 10$
 $8'' \times 8'' - 15$
 $8'' \times 1'' - 10$
 $8'' \times 8'' - 1 \text{ \& } 6 - A$
 $8'' \times 1'' - 10$
 $8'' \times 4'' - 8$
 $8'' \times 1'' - 10$
 $8'' \times 6'' - 12$
 $8'' \times 1'' - 10$
 $8'' \times 8'' - 3 \text{ \& } 6 - B$

Column 2

$2'' \times 4'' - 15$
 $2'' \times 1'' - 9$
 $2'' \times 6'' - 4$
 $2'' \times 1'' - 9$
 $2'' \times 4'' - 13$
 $2'' \times 1'' - 9$
 $2'' \times 8'' - 5$
 $2'' \times 1'' - 9$
 $2'' \times 12'' - 3$
 $2'' \times 1'' - 9$
 $2'' \times 8'' - 8$
 $2'' \times 1'' - 9$
 $2'' \times 6'' - 16$

Column 3

$6'' \times 2'' - 8$
 $6'' \times 1'' - 11$
 $6'' \times 6'' - 2 \text{ \& } 15 - C$
 $6'' \times 1'' - 11$
 $6'' \times 10'' - 14$
 $6'' \times 1'' - 11$
 $6'' \times 8'' - 15 \text{ \& } 16 - D$
 $6'' \times 1'' - 11$
 $6'' \times 6'' - 2 \text{ \& } 15 - C$
 $6'' \times 1'' - 11$
 $6'' \times 4'' - 7$
 $6'' \times 1'' - 11$
 $6'' \times 6'' - 13$
 $6'' \times 1'' - 11$
 $6'' \times 5'' - 15$

Column 4

$8'' \times 8'' - 16$
 $8'' \times 1'' - 10$
 $8'' \times 6'' - 13$
 $8'' \times 1'' - 10$
 $8'' \times 4'' - 15$
 $8'' \times 1'' - 10$
 $8'' \times 10'' - 3$
 $8'' \times 1'' - 10$
 $8'' \times 6'' - 6$
 $8'' \times 1'' - 10$
 $8'' \times 4'' - 14 \text{ \& } 15 - E$
 $8'' \times 1'' - 10$
 $8'' \times 10'' - 2$

Column 5

$4'' \times 6'' - 7$
 $4'' \times 1'' - 9$
 $4'' \times 6'' - 12$
 $4'' \times 1'' - 9$
 $4'' \times 10'' - 4$
 $4'' \times 1'' - 9$
 $4'' \times 10'' - 15$
 $4'' \times 1'' - 9$
 $4'' \times 4'' - 16$
 $4'' \times 1'' - 9$
 $4'' \times 8'' - 8$
 $4'' \times 1'' - 9$
 $4'' \times 4'' - 5$

Column 6

$8'' \times 8'' - 1 \text{ \& } 4 - A$
 $8'' \times 1'' - 11$
 $8'' \times 6'' - 8$
 $8'' \times 1'' - 11$
 $8'' \times 6'' - 16$
 $8'' \times 1'' - 11$
 $8'' \times 4'' - 14$
 $8'' \times 1'' - 11$
 $8'' \times 10'' - 12, 13 \text{ \& } 16 - F$
 $8'' \times 1'' - 11$
 $8'' \times 8'' - 15$
 $8'' \times 1'' - 11$
 $8'' \times 6'' - 7$

Column 7

$2'' \times 6'' - 5$
 $2'' \times 1'' - 10$
 $2'' \times 10'' - 2$
 $2'' \times 1'' - 10$
 $2'' \times 4'' - 15$
 $2'' \times 1'' - 10$
 $2'' \times 10'' - 6$
 $2'' \times 1'' - 10$
 $2'' \times 6'' - 4$
 $2'' \times 1'' - 10$
 $2'' \times 2'' - 16$
 $2'' \times 1'' - 10$
 $2'' \times 10'' - 14$

Assembling

The above list is a guide detailing how the quilt is put together. The measurements are the finished sizes and not the cut-out size, no further cutting of the fabric pieces is required.

Before assembling the columns, you should make up the blocks. There are 8 blocks in total to be made. Refer to the letters in the table above and use the corresponding diagram to make each block.

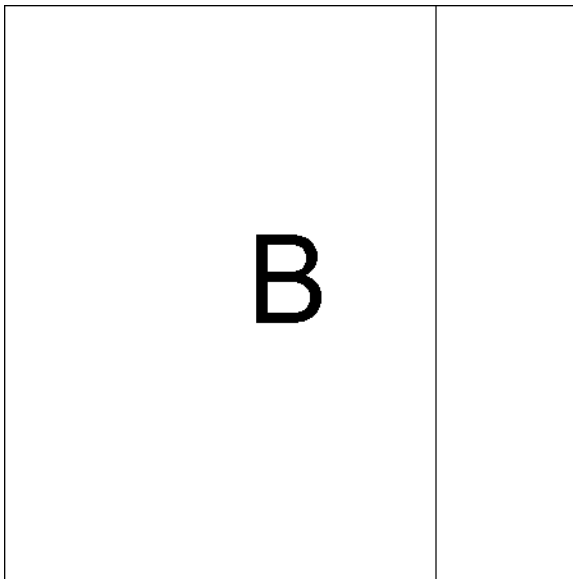
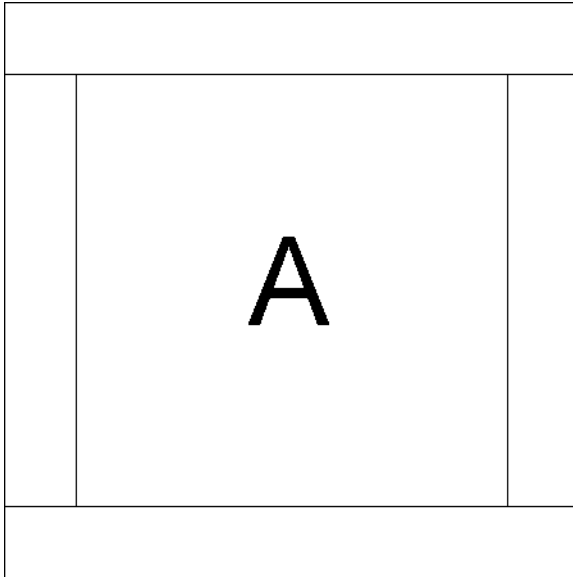
Once you have finished making all of the blocks, assemble the columns, using the list above as a guide. Do not forget to press back as you go.

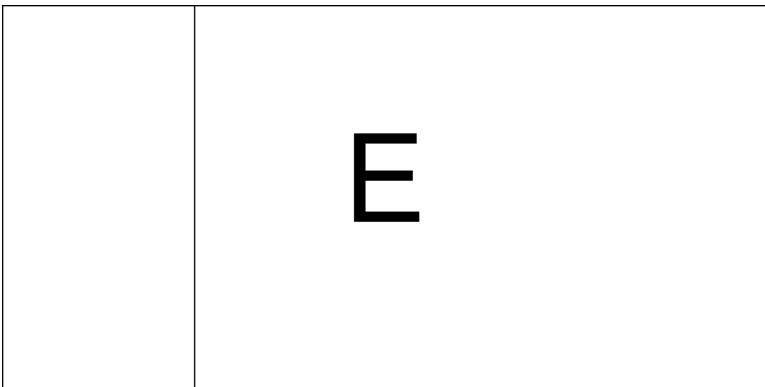
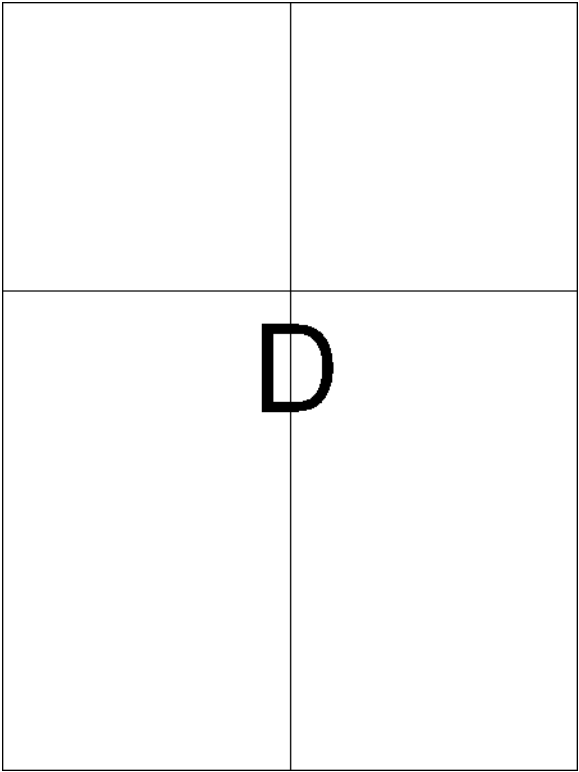
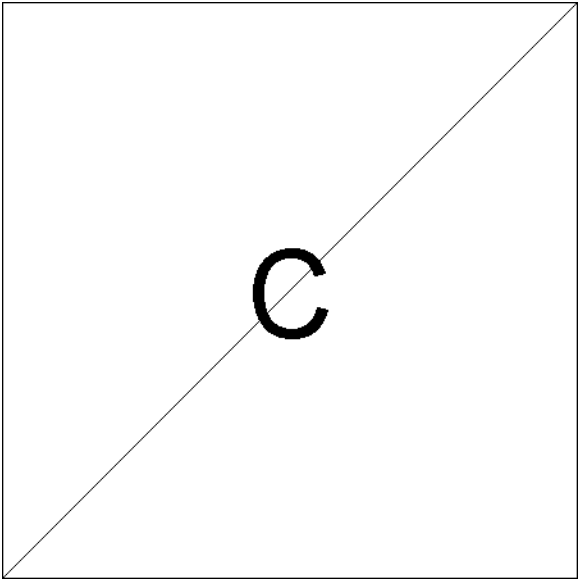
Join all of the columns together using the black fabric as sashing, you will have to join strips together to make up the full length required.

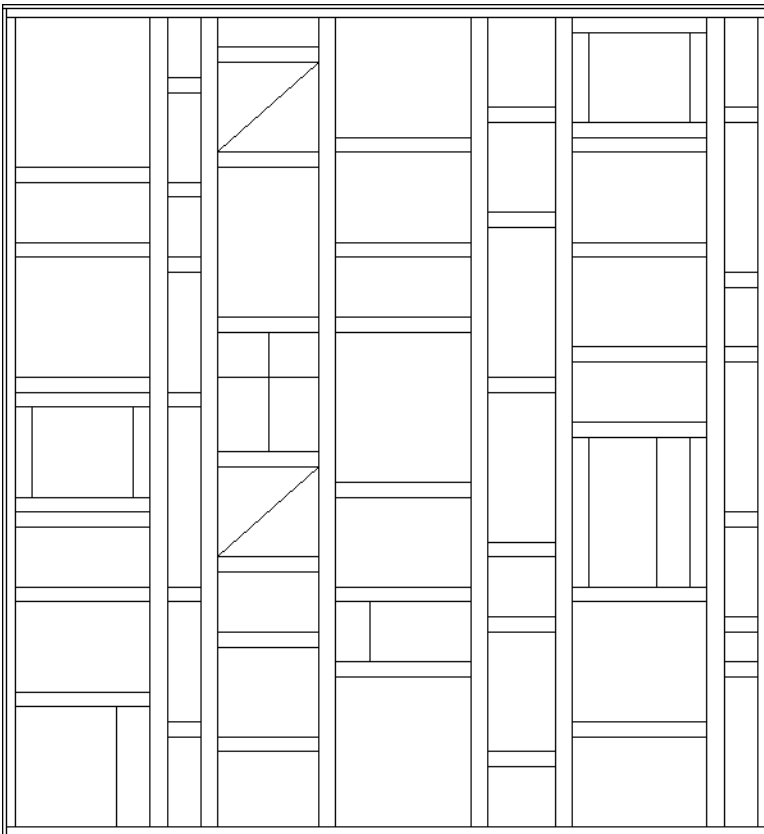
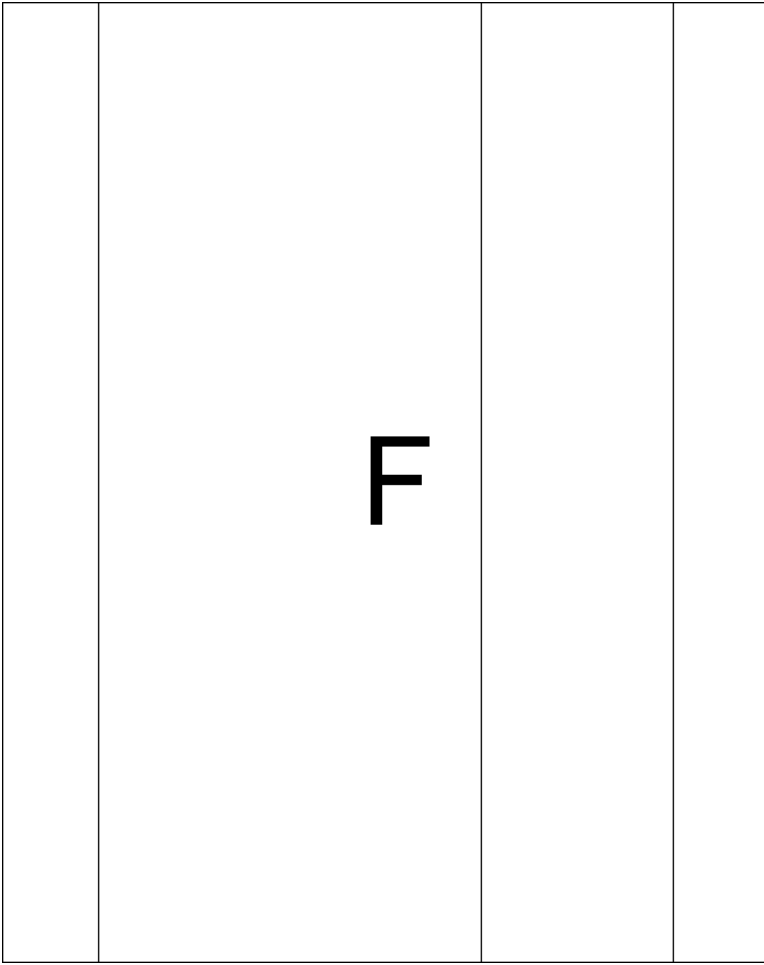
Add black fabric to the left and right hand sides of the quilt, followed by the top and bottom.

Place Bondaweb onto remaining sunflowers as required and press, you may wish to use some of the smaller sunflowers as I have done. Cut out and place

onto the quilt top where you wish your flowers to be, I used 9 large sunflowers and 4 smaller ones, but you can personalise your quilt if desired in your own way. Sandwich together top layer, wadding and backing. Quilt around the edges of your sunflowers and quilt sunflower designs over the rest of the quilt. You can use the linear sunflower fabric for inspiration. Using the yellow fabric, bind your quilt. You may also wish to bind the quilt using remaining pieces of fabric.







Main diagram